

Possibilities

COMMUNITY LINK

Summer/Fall 2013 Volume 19 / Number 2

Metro Expands To Benefit Consumers

Community Link's Fairview Heights Metro facility, located at 9815 Bunkum Road in Fairview Heights, IL, has been growing since its inception five years ago and is currently undergoing a large renovation project to meet the needs of the individuals in the Fairview Heights and surrounding areas. The construction project includes a 1,500 sq. ft. addition to the building, along with remodeling the current space to include restrooms, two classrooms, a conference room, and additional offices. Community Link is dedicated to keeping up with growth and improving the quality of life for people with disabilities in our community. This satellite facility provides a Day Training program and a Production setting that is person-centered, individualized, promotes personal growth, and encompasses a variety of skill building and employment opportunities for persons with disabilities. ❖



Construction began in May 2013 at the Fairview Heights Metro Facility.



An addition of 1,500 square foot of space was added for the growing facility.



The 1,500 square foot addition began close to completion.



The remodel of the front entrance of the Metro facility.



Down the hall at the front entrance of the Metro facility adds new flooring and lots of lighting.



The additional restrooms for both men and women allow for better wheelchair accessibility and more space for clients.

Possibilities is the newsletter of Community Link, a not-for-profit community agency providing services to adults and children who live in and around Clinton County. Headquarters are located at:

Community Link – East
P.O. Box 157 / 1665 N. 4th St.
Breesee, Illinois 62230
Phone: (618) 526-8800
Fax: (618) 526-2021
News Editor: Monica Mensing

ACKNOWLEDGEMENTS

Thank you to the following contributors to Summer/Fall 2013-2014 Possibilities:

Margie Abert, Jeanette Evans, Jamie Fields, Missy Gaskill, Chris Gebke, Deb Guest, Laurie Hemker, Carla Hilmes, Marla Hilmes, John Huelskamp, Karen Huelskamp, John Lengerman, Michele McDaniel, Janice McElroy, Barb Nelson, Eric Robke, Fran Taylor, Robin Thole, Chris Toennies, Jennifer Wienker

We welcome any questions or comments you may have about our newsletter.

EXECUTIVE DIRECTOR
John Huelskamp

BOARD OF DIRECTORS FY 2013-14

Jerry Albers	Jim Kreke
Debra Baldwin	John Lengerman
Brad Beck	Mike Nettekmeier
Wesley Gozia	Leslie Pedtke
Joseph L. Heimann	Charles V. Poettker
Steve Huelsmann	



MISSION STATEMENT

Community Link helps people with developmental disabilities, and other difficulties, achieve learning breakthroughs, find a job, live in a home of their own, and make friends.

Program Participants Get Out Together



Mike Maniscalli enjoying a night of bowling at V&H Recreation Center as part of the GO Activity held.

Community Link's Delta Squad, which was initiated through the Strategic Planning process, has formed "GO" Get Out Together events to connect the people we serve with staff and others outside the normal realm of the production and day programs. These events have included bowling night, outdoor movie night, game night, an ice cream social, shopping at the mall, pizza making in an outdoor oven, Legally Blonde at The Looking Glass Playhouse in Lebanon, IL, and The Wizard of Oz at Mater Dei Catholic High School in Breesee. These types of events enhance and encourage involvement with peers, provide opportunities to become more active in the community, and develop social skills. We would love to have volunteer support to help us continue to provide opportunities through this program. If you are interested in volunteering your time, please contact us. ❖



The pizza making GO Activity was a huge hit at the home of Rick & Barb Nelson! From l to r: Sean Herzling, Amanda Cawvey, Mark Schomaker, Mallory Wessling, and Clarissa Ribbing, Aviston CILA staff.



Joe Peters and Michelle Peters enjoying ice cream with their favorite topping at the Ice Cream Social, which also included fishing. The event was held on the beautiful grounds of Community Link's East location in Breesee.

Wellness Committee Educates Staff and Participants

The newly formed Wellness Committee is unveiling programs in education, nutrition, and activity to ensure staff and program participants are making healthy life choices. Starting in September, there will be a movement time for the entire agency to get up and get moving to clear their minds. The education piece includes the importance of drinking water, and the nutritional piece consists of food groups and a healthy plate. ❖



Message from the Board President



Another year has come and gone for Community Link and my service as Board President and I'm pleased to be able to serve the organization for one more term. It's a pleasure to work with committed board members and staff to achieve our mission each and every day.

I'd like to welcome our two newest board members Debra Baldwin and Joseph Heimann. Ms. Baldwin's son is a client at the Metro location and she brings a very enthusiastic approach to her position. She also has been extremely helpful in gaining more public awareness for Community Link in the Metro area. Mr. Heimann is an administrative law judge and has a sister who is a client at Community Link. Joe brings a very thoughtful approach to our discussions at the board level.

The board along with the staff is currently working to complete a new strategic plan for the organization. I appreciate the work of Vertical Performance and our facilitator Lyndon Joost

during this process. Our hope is to have board adoption of the plan in September and get started on the implementation of its many phases and aspects immediately thereafter.

Community Link is very well positioned to face the challenges that lay ahead. As Executive Director John Huelskamp refers to in his article, we are an organization that has always performed in a positive way to achieve what we set out to do. I agree with John's perspective that Community Link is ready for the future, whatever it brings, to serve our clients and their families.

My sincere thanks to all of our families for their support of our organization, without your belief in our mission we cannot accomplish what we set out to do.

The staff at Community Link is to be commended for their day to day contributions to better the lives of the clients they serve. It is a total team effort and your hard work does not go unnoticed by your board. ❖



Welcome New Board Members



Community Link welcomed two new members to their Board of Directors in March 2013.

Judge Joseph Heimann of Highland comes to Community Link with over 30 years of federal service. Judge Heimann, Colonel, USAF retired, currently serves as an Administrative Law Judge with the Social Security

Administration, after 27 years of active duty as a Judge Advocate in which he served commanders at every level, to include the Chairman of the Joint Chiefs. Joe welcomed the opportunity to work with Community Link in the hopes of serving his sister, Peggy, and others with developmental disabilities and other difficulties. Joe and his wife, Nancy, both originally from Clinton County, are the proud parents of a son, a daughter, and four grandkids.

Deb Baldwin of Fairview Heights has been retired since 2009

and brings with her experience in the fields of advertising and computer technology.

Deb has been actively supportive of both the Fairview Heights Police Department and Fairview Fire Department since 1996, publishing a newsletter with crime and safety tips that is mailed out bi-annually to the residents of Fairview Heights. Deb is co-founder of the organization CUFF (Citizens United For Fairview), which also hosts an annual recognition night for local law enforcement and firefighters.

Deb's youngest son is a participant in the day program at the Community Link Metro (Fairview Heights) location. Deb enjoys spending time with her family, especially her grandchildren. As a strong parent advocate, Baldwin looks forward to contributing her experience and dedication to Community Link. ❖



BOARD OF DIRECTORS FY 2013

OFFICERS

President John Lengerman
Executive Director, Greater Belleville
Chamber of Commerce

Vice President Brad Beck
Associate Executive Director, Christian Social
Services of Illinois

Treasurer Mike Nettekmeier
CFO (retired) Scott Air Force Base

Secretary Jerry Albers
Maintenance Department, St. Joseph Hospital
Breese

DIRECTORS

Deb Baldwin
Co-Founder, Citizens United for Fairview (CUFF)

Wesley A. Gozia
Attorney/Owner, Gozia Law Firm LLC

Judge Joseph Heimann
Colonel, USAF Retired
Administrative Law Judge, Social Security
Administration

Steven R. Huelsmann
Service Recipient Representative

Jim Kreke
Vice-President, First County Bank

Leslie A. Pedtke
Administrator, Aviston Countryside Manor

Charles V. Poettker
President, Poettker Construction

Jan Wilburn
Owner & CEO, Kohnen Concrete Products

KEY STAFF FY 2013

John Huelskamp
Executive Director

Fran Taylor
Director of Finance and Administration

Barb Nelson
Director of Adult Programs

Janice McElroy
Director of Children's Programs

Jamie Fields
Director of Development

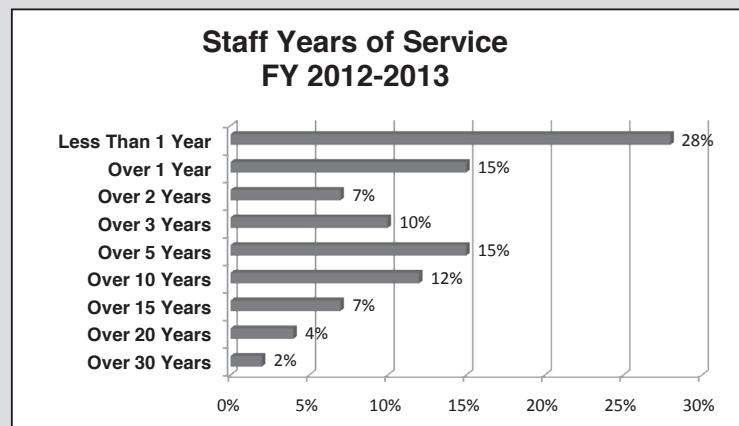
Adult Day Programs Consumer Advisory Council

The Consumer Advisory Council (CAC) acts as advocates for all consumers. The CAC is made up of five consumers elected from a consumer voting process. The CAC makes recommendations, voices their concerns, and discusses issues with representatives of the agency. These issues are incorporated into the program evaluation process and used in Strategic Planning. The CAC meets quarterly, followed by an all-consumer meeting discussing the content of that meeting and any other concerns, comments, or suggestions. ❖



Members from Adult Day Training Breese site l to r: (front row) Chris Gebke (Associate Director of Adult Day Programs and Council Chairperson), Kathy Wempe (front), Mallory Wessling, Heather Holthaus, Katie Bunt, Samantha Haar (front), Jan Wilburn, CL Board of Directors Representative, and not pictured alternate Jason Seidel.

Members from Adult Day Training Fairview Heights Metro site include: Sarah Harr, Daniel Hardin and Flo Thompson.



Total number of employees at end of fiscal year: 165

Total turnover rate for fiscal year: 28%

Number of employees who ended employment: 47

FINANCIAL REPORT

Community Link is pleased to present the following audited summary of revenues, expenses, and changes in net assets for the Agency's Fiscal Year 2012-2013, ending this past June 30. For a copy of the completed audit, please e-mail info@commlink.org or call (618) 526-8800.

Revenue

Contributions/Fundraisers	\$452,440	6%
Government Funding	\$6,147,711	82%
Client/Family/Third Party Fees	\$478,358	6%
Sales from Worksites	\$337,053	4%
Investment and Other Income	\$88,965	2%
Total Operating Revenue	\$7,504,527	100%

Operating Expenses

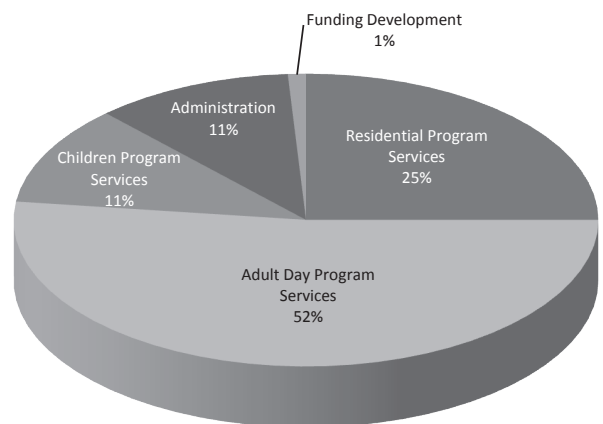
Salaries & Benefits	\$5,174,058
Other Operating Expenses	\$1,965,968
Total Operating Expenses	\$7,140,026

Net Operating Gain \$364,501

Depreciation Expense \$148,248

Net Gain after Depreciation Expense \$216,253

Functional Expenses FY 2012-2013



Community Link's \$7 million budget flows back into the surrounding communities, through salaries paid to employees and the purchases from local vendors.

First Step strives to meet the needs of children and families...



The Early Intervention Program of First Step specializes in pediatric therapies for children ages birth to three. Children that have difficulties or disabilities in speech, language, cognition, self-help skills, socialization, behavior, or motor skills may benefit from these services. Kim Lohman, Disabilities Service Coordinator, is helping Jayce increase his vocabulary through the parachute game and "popping popcorn".



As part of the Early Head Start Program of First Step Early Learning & Family Support (a division of Community Link), Chrissy Brown, Home Visitor, demonstrates building with homemade blocks in a Parent as Teachers activity.

First Step Early Learning & Family Support Programs provide a diverse set of services for children and families: Early Intervention therapy services, for children with special needs 0-3; Children's Waiver case coordination, for children 3-21; Prevention Services, for children 2-4; developmental screenings; and Early Head Start, for children 0-3 and pregnant mothers. Prenatal and parent support and education are offered through classes at St. Joseph's Hospital, which is funded through United Way of Greater St. Louis. ❖

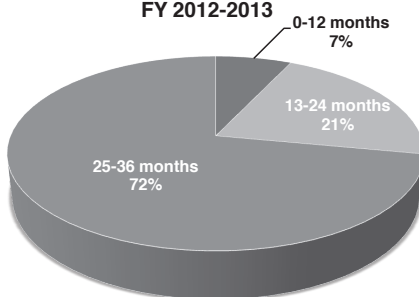
The need for EI and EHS services grows...

The number of children receiving First Step Early Intervention therapy services continues to increase, growing from 204 children served during FY 2012 to 258 in FY 2013. The program also grew from having seven skilled contractual therapists to nine. During this past year, a total of 4,944 direct service hours have been provided to children and families with special needs. This is an increase of 1,837 hours from the previous year. First Step is working to increase case coordination services to provide parent advocacy, trainings, support and resources for parents with children of special needs, with a focus on supporting parents with the IEP and IFSP process. A goal of EI is for families to learn how to more effectively meet the needs of their children and enhance growth and development while providing in-home therapy services in the child's natural environment, using resources from the child's home. Early Head Start Parent Educators served a total of 82 children and 9 pregnant women in FY 2013 by providing home based services to low income and other at risk families. Empowering parents to take the role as their child's primary teacher, preparing them for school readiness, and ensuring the children's preventive and primary health care needs are being met are priorities of this program. ❖

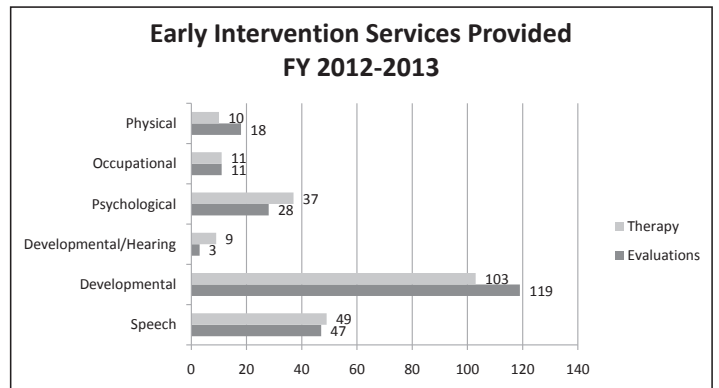
Prevention to expand to provide services all year round...

The First Step Prevention program is expanding to provide prevention services year round to children with special needs that would not otherwise be eligible for Early Intervention or Early Head Start. Prevention fills the gap by providing in-home, comprehensive services for children who fall in the gap of being too old for Early Head Start services and are waiting to be accepted into a formalized setting (Head Start and/or Early Childhood program). Services are provided to prevent regression of progress made from discontinued therapy services. Our Prevention Specialist is certified and trained to use the Parents as Teachers curriculum and is able to utilize Creative Curriculum Activities. Any untreated delay or environmental stressors can cause a child to experience setbacks upon entering school. ❖

Early Intervention & Prevention Ages of Children Served FY 2012-2013



Families Receiving EI Service by County FY 2012-2013	%
Clinton	32
St. Clair	19
Madison	11
Marion	8
Washington	6
Montgomery	6
Bond	5
Calhoun	3
Macoupin	2
Christian	2
Greene	1
Jersey	1
Monroe	1
Perry	1
Randolph	1
Sangamon	1



Community Living Programs witness the power of community involvement...



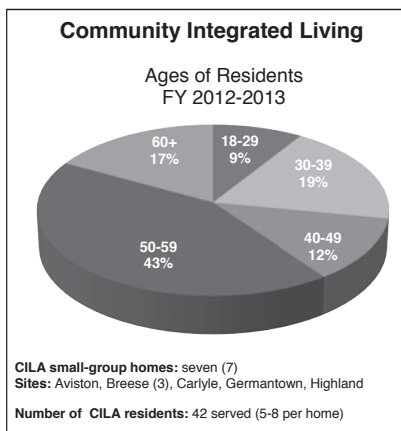
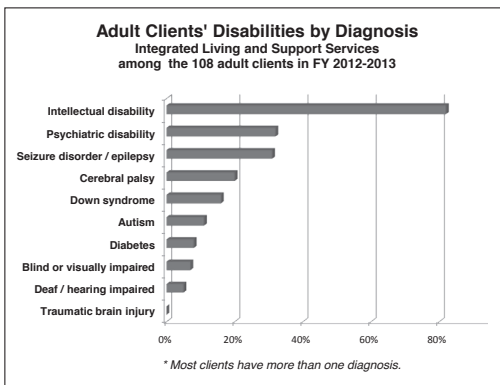
From l to r: residents, Alvin Hacker, David Dalhaus, Brandy Gallagher; volunteers, Rich & Marcie Hacker; residents, Deb Delano; Team Leader, John Lampen; resident, Tina Holtmann, and Community Integrated Living Specialist, Dylan Ritter. Seated on bench: residents, Marilyn Toennies and Deanna Nordike.

The power of community is witnessed in the transformation of one of Community Link's Community Integrated Living Arrangements (CILAs) in Germantown. This residence is home to seven individuals with developmental disabilities. The home's shrubs were very overgrown, hiding the windows and entryway of the home. The need for the upgraded landscape was recognized by Rodney Friederich of All Green Lawn and Kurt Ripperda of Jerry's Landscape Nursery. Rodney pulled all of the shrubs in the spring of 2012...then came the heat wave! The ground remained untouched.

This spring, Rich and Marcie Hacker called to express their interest in giving their time and talents to complete the project. A generous donation from the Catholic Holy Family Society's Hearts and Hands Program got them started, and soon other interested people and businesses offered contributions to this project. Jerry's Landscape Nursery, August Wildhaber Sales & Services, Tonnie's Hardware & Rental, and Gerry Kohnen all contributed to this project. Rich and Marcie Hacker edged



the landscape area with bricks, cleaned up other shrubs and trees throughout the yard, added a brick seating area with a bench, and planted all new plants. The result is a beautiful new addition which complements the house and gives the residents a nice place to relax and enjoy a bit of nature in their yard. The residents of this home are very grateful for the kindness and support of these individuals, and are very happy with how their home looks. ❖



Enriching Opportunities...

FUSION Participants viable in the community

The purpose of the Finding Unique Services by Individualizing Opportunities and Needs (FUSION) Program is to enhance and encourage community involvement thus allowing individuals to become more active members of their communities through social and skill development and support. The program is designed to take a unique look at ways each individual can utilize community resources based upon their own personal interests. This past year, host organizations included the following:

- American Cancer Society, Highland
- Breese Junior Women's Club
- Chakota Therapeutic Horse Ranch
- Clinton County Humane Society
- Knights of Columbus, Carlyle Council #1382
- Retirement, Nursing Rehabilitation Centers:
 - Aviston Countryside Nursing Home
 - Hitz Memorial, Alhambra
- U.S. Army Corps of Engineers

Developmental Training participants engage in lifelong learning...

Every afternoon at the Breese Day Training West site, clients participate in breakout classes where they can learn specific skills. One of the breakout classes offered is Sign Language. This class is taught by Dianna Kanthack and Jamie Duncan and has been running since August 2012. In this class, clients learn signs that help them communicate their wants and needs in their everyday lives. Bobbie can now sign “yes” and “no”. Tony can sign “restroom”. Hanna Laminack has learned at least sixty signs. Some of her favorites include “mother”, “father”, “food”, “drink”, and “house”. ❖



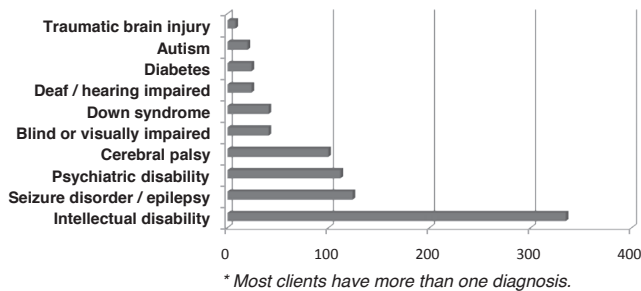
Pictured l to r: Dianna Kanthack, Habilitation Specialist, Jamie Duncan, Habilitation Assistant, and Hanna Laminack, Program Participant, signing “I love you.”

Breese Day Training West Classroom 1 learned about fruit and the health benefits of fruit. The class made 3D fruit mobiles to hang from the ceiling, discussed what fruits were in season, what each participant’s favorite fruits were to eat, and how eating healthy is good for the body. The class made a list of their favorite fruits, and Brittany Weathers, Habilitation Specialist, took a few participants to the grocery store to purchase the fruits. Everyone in the class enjoyed a fruit salad with their favorites! ❖



Beverly Brandkamp enjoying her fruit mix after learning about the health benefits.

Adult clients' disabilities by condition
among the 345 adult clients in FY 2012-2013



Adults Receiving Services by County
FY 2012-2013

Clinton County	56%
St. Clair County	36%
Madison County	7%
Washington County	0.5%
Bond County	0.5%

Total Adult Day participants, past year: 345

Total days of service provided, past year: 242

Total hours of day services provided, past year: 362,395

Participants enhance the community through employment and recycling growth...



Mallory attends work every day assembling parts for one of our employers.

Mallory Wessling works in the Work Training program. She and her co-workers learn work related skills and work behaviors such as being punctual to their work station, following supervisor directions, and completing an assigned task in a timely manner.

In addition to Work Training, other programs include Supported Employment, Job Readiness Training, and Job Placement. ❖

Recycling Business Grows

In FY 2012-2013, CL increased recycling by 26 tons. We encourage households and businesses to “go green” through our curbside and business pickup services in Clinton County, along with drop off locations in Beckemeyer, Damiansville and Germantown. This past fiscal year we processed over 615 ton of material. ❖



Chris Toennies (l) provides a tour of the recycling program to pre-school students from the Child Development Center at Scott Air Force Base.

The recycling program provided the following:

- 550 households with curbside services
- 41 businesses for pickup
- 8 part-time employment opportunities for individuals with development disabilities
- 4 part-time drivers

In appreciation for our current employers



Arrow Group Industries, Inc.
Breese



Basler Electric
Highland



Eaton's Cooper B-Line
Highland & Troy



Highland Recycling & Shredding
Highland



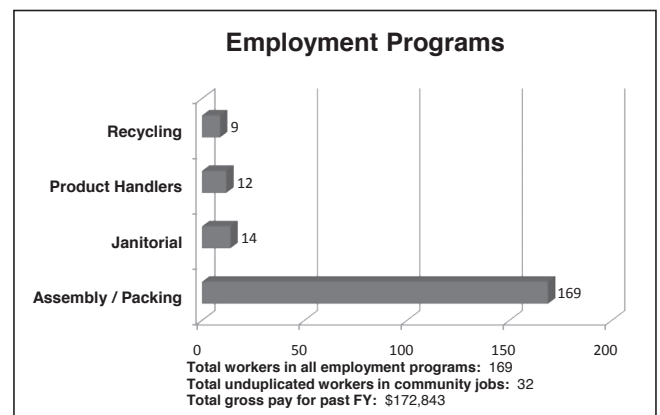
Jim's Formal Wear
Trenton

With gratitude to our supported employment sponsors

CC Food Marts, Breese
Casey's General Stores, Breese
Hansen Foods, Inc., dba Hardee's, Breese

We're pleased to provide janitorial services for

Community Link, East Building, West Building & First Step
Germantown Public Library
Clinton "Marc" Smith, D.C., Breese
Special Olympics Illinois, Highland
Schuette SuperValu Markets, Breese & Carlyle





FY 2012-2013 Donor Roll

With Gratitude

This Donor Roll honors the funders, businesses, organizations, and individuals who have made it possible for the Agency to serve nearly 550 individuals and their families on an ongoing basis (and hundreds more with occasional services) during the 12 months ended June 30, 2013. In an era of diminished government funding, our not-for-profit charitable organization increasingly relies on community support. To each of you, we are grateful for your gener-

ous support. To those who have asked to be listed as anonymous, please know that your giving is much appreciated. To those we may have inadvertently omitted, we offer our sincerest apologies, ask your understanding, and invite you to let us know about the omission, so we may adjust our records and recognize your contribution. Thank you again for transforming disabilities into possibilities!

IN APPRECIATION OF OUR DONORS July 1, 2012 through June 30, 2013

FEDERAL/STATE GRANTS

Early Head Start Continuation Grant
Illinois Department of Commerce and Economic Opportunity
(recycling grant for new loading dock)
Title XX Early Intervention / Regular Work
Health Matters CAP IL Community Associate Grant

CONSOLIDATED CAMPAIGN FUNDING

Combined Federal Campaign (CFC)
United Way of Greater St. Louis (allocation)
United Way of Greater St. Louis (one time basic needs grant)

FOUNDATION GRANTS

Employees Community Fund of Boeing St. Louis
(bathroom fixtures for Metro location)
Carlyle Healthcare Foundation (dental work for CILA resident)
Clean Energy Foundation (lighting at all facilities)
Ameren Non-Residential Hardship Grant (energy cost savings)
Payless Gives (shoes for children)

LOCAL GOVERNMENT GRANTS

St. Clair County 708 Mental Health Board
(art therapy program)
Clinton County 708 Mental Health Board

*Please share the information below
with family and friends ...*

FEDERAL EMPLOYEES AND RETIREES
may designate a payroll-deduct or 1-time gift to



by using

Code #83161 on the
Combined Federal Campaign Pledge Card



STATE OF ILLINOIS
EMPLOYEES AND RETIREES
may designate a payroll-deduct or 1-time gift to



by using

Code #195-035
on their State and University
Employees Combined Appeal Card.



GALA SPONSORS

Bob Brandkamp
The Family of Sean Herzing
First Bank
Gozia Law Firm, LLC
Highland Recycling & Shredding
Jansen Chevrolet
Jim's Formal Wear
K & J Chevrolet, Inc.
Koetting Insurance
Kohnen Concrete Products, Inc.
Mutual of America
Poettker Construction Co.
Southern OB/GYN Associates
Timmermann Milk Service, Inc.

BUDDY WALK SPONSORS

First County Bank
Foppe Insurance Agency
Henken Storage
Rooters Asphalt

OTHER BUSINESS DONATIONS

(excluding Golf Scramble Sponsors, recognized in ad on the right)

Aviston Lumber Co.
Beckmann Distribution Service, Inc.
Benhoff Insurance Agency
Beyond the Garden Gate
Boulder Yacht Club
Breese Motor Sales, Inc.
Carl's 4WD & Performance Center
CC Food Marts
Clinton Seamless Guttering
Dairy King
DCA Construction
Donnewald Distributing Employees
ExecuTech Strategic Consulting
Farmers State Bank - Hoffman, IL
First Bank - Breese
First County Bank
First National Bank in Carlyle & Aviston
Foppe Insurance Agency
Gateway FS

Gil Klein's Brand Source TV & Appliances
H & R Block
Imming Insurance Agency
Jim's Formal Wear
K & J Chevrolet, Inc.
KJ Appliance Repair
Knotty Pine Inn & Motel
Koetting Insurance
Krehbiel & Associates, LLC
Meyer Catering
Meyer's Greenhouse & Nursery
Mid-County Auto Supply
Mideastern Plumbing, Heating & AC
Larry Deiters - NACO Printing
Rivera Medical, LLC
Sandy's Hair Design
Schuette's Markets
Snick's Tavern, Inc.
Southern OB/GYN Associates
The Design Studio

EMPLOYERS

MATCHING GIFTS

Covidien
Macy's
Shell Oil Co. Foundation
TIAA-CREF Employee Giving Campaign

THIRD-PARTY FUNDRAISERS

Clinton County Licensed Beverage Association
Team B.E.S.T.
Fastlane for Hannah - Mike & Debra Berndsen
Kathy Holthaus

ORGANIZATIONAL GIFTS

Breese Junior Women's Club
Catholic Holy Family Society
• Council #28
• Council #82
Catholic Urban Program
Healthcare Foundation
Junior Service Club of St. Clair County
Knights of Columbus
• Albers Council #9768
• Aviston Council #11110



Thanks to the sponsors of our 17th Annual Golf Scramble
Saturday, June 22, 2013

PRESENTING SPONSORS



GOLD SPONSOR



SILVER SPONSORS



CLIENT TEAM SPONSOR

First National Bank - Carlyle

BRONZE SPONSORS

Albers Knights of Columbus Council #9768
Aviston Knights of Columbus Council #1110
Beckmann Construction Company
Bestway Equipment, Inc.
Breese Knights of Columbus Council #2869
Dairy King Breese & Trenton
Diekemper Excavating, LLC
First Bank - Breese
Germantown Kernel Nut Club
Gerstner Plumbing, Inc.
Hempfen Funeral Home - Carson Hempfen
HMG Engineers, Inc.
K & J Chevrolet, Inc.
KJ Appliance Repair
Krehbiel & Associates, LLC
Luebbers Welding & Mfg., Inc.
M & E Auto Body, Inc.
Moss Funeral Home
Nine Seventy Furniture & Flooring
Pat & Esther Norrenberns
Schuette Super Valu Markets
Smith Chiropractic Clinic
Southern OB/GYN Associates
Timmermann Milk Service, Inc.
Toennies Service Co.
Wade Sales & Services, Inc.

Gifts In Kind & Other Donors: Ahner Florists & Greenhouses, Aviston Lumber Co., Barb & Rick Gerstner, Benhoff Insurance Agency, Bent Oak Golf Course, Breese Journal & Publishing, Clinton County Farm Bureau, Carlyle Pizza Hut, Dairy King, Dave Klumenke, Edward Jones-Jim Kueper, Excel Bottling, First County Bank, Foppe Ace Hardware, Germantown Trust & Savings Bank, Gerstner Plumbing, Inc., Good Ole Plant Land, Gozia Law Firm, Haag Food Service, Inc., Harry & Darleen Nelson, Hidden Lake Winery, Janice Aarns, Jerry's Landscape Nursery, Kim Karbach, Knotty Pine Inn & Motel, Mioux Florist & Greenhouse, Nine Seventy Furniture & Flooring, Nu Image Salon Spa & Tanning/Posh Boutique, Pauline Glenn, Marshal D. Holzhauser, Attorney-at-Law, Mid-County Auto Supply, Pizza Market - Breese & Trenton, Poettker Construction Co., Royal Office Products, Schuette Super Valu Markets, Schwarz Hardware Stores, Inc., Southern Bus & Mobility, St. Joseph Hospital Healthplex, Strano & Associates Real Estate, Taylor Made Signs, Wal-Mart - Carlyle, Watts Copy Systems, Inc.

Thanks to all the golfers and team sponsors!

Community Link is a proud member of
United Way of Greater St. Louis





First Step Early Intervention program facilitates playgroups for families and their children. These playgroups support the parent-child relationship and recognize that the parent is the first and most important teacher for their child.



Community Link program participants help several times throughout the year with mailings. The biggest being Possibilities, and getting over 3,800 pieces ready to send.



Margie Abert, Personal Development Specialist at Community Link, hosted a Halloween Party for participants in the Family Support Unit and Intermittent CILA programs.

- Breese Council #2869
- Carlyle Council #1382
- Highland Council #1580
- New Baden Council #10311
- Lions Club – Breese
- Lions Club – Carlyle
- St. Felicitas Church Altar Sodality
- St. Monica's CCW – St. Augustine
- Church-Breese VFW Auxiliary
- Carlyle Post #3523

IN MEMORY OF...

Cheryl Albers from Donald & Claudia Albers

Karen Budde from Anonymous
Dennis & Sandy Albers
Anthony & Donna Budde
Shirley Budde
Stanley Budde
CC Food Marts
Elaine Fehrmann & Dennis Winkeler
Nathan & Amanda Freund & the Boys
Paul & Julie Fuehne
Sue & Ron Fuehne
Janice Gilmor
Joseph & Carol Hemker
Linda Klostermann
Norbert & Jane Klostermann
James & Mary Lampe
Deb Litteken
Jim & Carol Loepker
Phillip & Carol Menkhaus
Ann & Bill Milliken
Cindy, Roger, Brian, Julie, & Christi Niemeyer
Rita Nordhaus

Maggie Peters
Dan & Judy Pollmann
St. Joseph Hospital
Joan Theising
Wayne & Angela Toennies
Steve Verdeyen
Greg & Jan Wilburn
Paula (Winkeler) Williams
Andrew Winkeler
Bernard & Rita Winkeler
Daniel & Sue Winkeler
The Family of Karen Budde

Van Causey from Malone Family

Paul Duncan from Marilyn Duncan

Bernice Freund from Kristine Siegler
Diane Von Bokel

Bob Hemker from Kristine Siegler

Dorothy M. Humphrey from Anonymous
Joyce Becker
Charlie & Synthea Fischer
Brian & Karen Humphrey
Rodney & Emily Ibendahl
Tom & Ruth Kueper
Kurt & Lynn Ripperda
Dan & Jane Rosen
Mark & Kelly Rosen
James & Cathy Shew
Jim & Louise Stricker
Joan Theising
David & Lena Woltering
The Family of Dorothy M. Humphrey

Lucas Frederick Johnson from Kevin & Liz Zenk

Joan Kemper from Kathy Austin

Tom & Brent Kohrmann from Catholic War Veterans
Marion Post #1780
Betty L. Gross
Kimberly Johnson
Helen Kohrmann
Kelly Kohrmann
Phillip & Carol Menkhaus
Michael & Elizabeth Parker
Pharmacy Administration Consultants
Mary Jane Schrage
Amy Tiemeier
William & Lynda Uhde
Dewey & Paula Williams
The Family of Tom & Brent Kohrmann

Lorraine Linnemann from Steve & Marcella Kohnen
Greg & Jan Wilburn

Ken Loepker & Les Laux from Sandy Harris

Tom Marti from Mr. & Mrs. Bill Basler
Ken Becker
Jeanette Benhoff
Dan & Ruth Bickline
Bill Bust
Patricia Davenport
Rich & Marcie Hacker
Hansen Family Trust
Donna Hollenkamp
Jean Holtgrave
IDPH Co-Workers of Karen Senger
Albert & Doris Johnson
Christopher & Susan Johnson
John & Mary Kampwerth
Laura Kapp

Elaine Klostermann
 Steve & Darlene
 Kochner
 Brad & Jean Korte
 Mike & Barb Kuhl
 Al & Eric Lengermann
 Joseph Lengermann
 Dorothy Marti
 Jerry & Irene Marti
 Roy & Leona Marti
 Rosemary Meyer
 Jerry Minchey
 Jon & GERALYN Minton
 & Family
 Ron & Leona Moss
 Paul & Joyce
 Musenbrock
 Mark & Joyce
 Niemann
 Sandra Plocher
 Eileen Reding
 Terry & Joan Riffel
 Shirley Sackett
 Jim & Lynn Schmidt
 & Kim
 Edward Schrage
 Ray & Romy Schrage
 Willa Senger
 Kristine Siegler
 Gerald & Bernette
 Sparlin
 Alan & Ann Stoecklin
 Paul Talleur
 Laurie & Gary Todt
 Family
 Wayne & Jean Trampe
 Mr. & Mrs. Larry
 Wellen
 Paula (Winkeler)
 Williams
 Andrew Winkeler
 Franklin & Barb
 Zaloga
 Butch & Pat Zobrist
 Ronald Zobrist
 The Family of
 Tom Marti

Ken O'Dell *from*
 Jon C. Evers

Fred Olliges *from*
 The Becker Family
 Foundation
 Michael & Marlene
 Fields
 Royce & Marlene
 Fletcher

Mark & Donna
 Johnson
 Mildred Johnson
 James & Mary Lampe
 Lavern & Bernice
 Langhauser
 Brian & Blanch
 Schwarz
 Tom & Deb Thole
 James & Mary Kay
 Wiegmann
 The Family of
 Fred Olliges

Bert Rakers *from*
 Jim & Eileen
 Boeckmann

Joe Ripperda *from*
 Steven & Doris
 Medhurst
 Frank T. Richter
 Theresa Richter

Wilhelmine Schroeder
from
 Theresa Richter
 Beverly Ripperda

Florence Seiffert *from*
 Kristine Siegler

Margaret C. Thole
from
 Anonymous
 Aviston Lumber Co.
 Donald & Melinda
 Hustedde

Janet Kampwerth
 Deb & Ken Keilbach
 Richard & Debra
 Knebel
 Leo & Barb Lammers
 Donald & Marian
 Perez
 Dennis & Patricia
 Potthast
 James & Kathleen
 Rensing
 Theresa Richter
 Tom & Jane Sheridan
 Leo & Marsella Varel
 Bernell & Yvonne
 Warnecke
 Dominic & Janice
 Wessel
 Wiegman Ford

Roger & Mary Lou
 Wolfe
 Sherry & Paul Wuller
 The Family of
 Margaret C. Thole

TRIBUTES TO...

Bob Brandkamp *from*
 Kathy Austin

Terry Gerstner *from*
 Marvin & Jane
 Hollenkamp

**Ralph & Ruth
 Langhauser 50th
 Wedding
 Anniversary** *from*
 David & Lucille
 Cooper
 Tom & Jan Hustedde
 Joe & Sylvia
 Langhauser
 Lavern & Bernice
 Langhauser
 Ralph & Ruth Ann
 Langhauser

FAMILY FOUNDATION & INDIVIDUAL GIFTS

A
 Anonymous
 Anonymous Macy's
 Employees
 Anonymous AT&T
 Employees
 Anonymous CFC
 Donors
 Raymond & Melodie
 Ainslie
 Bob & Sue Albers
 Brad & Phyllis Albers
 Chuck & Diane Albers
 Clint & Chrissie
 Albers
 Dennis & Sandy
 Albers
 Donald & Claudia
 Albers



Terry Dodson, CL program participant at the Fairview Heights Metro location, received the Hurray for Hannah Award at the Special Olympics Track & Field competition in April 2013.



Sparky came for a visit during a little down time at the Breese East location. Joan had a nice break from working to spend a little time petting Sparky. Sparky is owned by Geri Detmer, a CL Direct Service Provider.



FUSION participants along with 2 CILA homes spent the day baking and hosted a bake sale to donate the proceeds to the Clinton County Humane Society (CCHS). Pictured l to r: CL program participants Brandy Gallagher, Sandy Plocher, Diane Hemker, and Jennifer Eide present a check to CCHS volunteers Stacy and Laura.



Alex Morrison performs his song he co-wrote at the Community Link St. Patrick's Day Gala on March 17th, 2013. Alex was one of the three performances from program participants. Ron Bequette wrote a speech about how Community Link's programs created an environment that he would not have received elsewhere. Kathy Wempe performed "Tongue Twister" on the piano.



First National Bank of Carlyle sponsored a client team at the 17th Annual Breeze Golf Scramble on Saturday, June 22nd, 2013 at Bent Oak Golf Course, allowing them to take part in this fun day. Pictured l to r: Brenda Shelton, Brian Tucker (Program Manager), Erik Schwalenberg, and Charlie Drees.



Team Tom Marti started the 7th Annual Buddy Walk on Saturday, April 27th, 2013 in loving memory of Tom Marti.

Jerry & Marian Albers
Mick & GERALYN Albers
Pat Albers
William Anderson
Jason & Katie Anselment
Tony & Deb Antonacci
Ronald & Leigh Ann
Arentsen
Bob Astroth
Ann Austin

B
Deacon Rich & Pat
Bagby
Shawn Balint
Nicole Baquet
Vincent & Connie
Barciszewski
Gerald & Dorothy
Bauman
Dale & Carol
Baumgartner
Brad & Krescene Beck
Jeffrey & Aggie Becker
Don & Beth Bedard
Michael & Michelle Beer
Nikki Beer
Jeanette Benhoff
Gene & Sharon Bickl
Dan & Darlene Billhartz
Francis & Helen
Billhartz
Mark & Lynn Billhartz
Bill G. Bodine
Brian & Julie Boeckman
Dot & Roger Boeckman
Jim & Eileen Boeckmann
David & Amy Boggs
Greg & Nikki Bollmann
Bob Brandkamp
Paula Brandkamp
Stan Brandmeyer,
Attorney-at-Law
Dan & Mardel Braun
Jerry & Joyce Brefeld
Jean Brenner's Family
Anthony & Donna
Budde
Harry & Cathie Buller
Jim & Mary Burns

C
Patrick Calvert, Sr.
Richard & Dorcas Cecil
John Cederlund
Teresa Chasteen
Lori Chesna

Jim & Arlene Clark
Anita Cook
Carl & Stephanie Cook
Greg & Norma Cook
Veda & Donald Cooling
Richard & Carolyn
Crocker
Caroline Cvetkovic

D
Richard & Carolyn
Davenport
Larry & Linda Davis
Nancy Day & David
Dalhaus
David & Jane Deiters
Philip & Joyce Detmer
Tom & Maribeth Detmer
Anna Belle Dixon
Alvina Donnewald
Elaine Duensing
Anna Duing
Agnes Dumstorff
Debra Dumstorff

E
Jim & Mary Edds
Carolyn Enboden
Mike & Brenda Endres
Paula Essenpreis
Skip & Shirley Etter
Terry & Mary Eversgerd

F
Lynda Fahrner
Elaine Fehrmann &
Dennis Winkeler
Norb Feltrop
Adam & Jamie Fields
Gwen Fischer
Tom & Shirley Fisher
Royce & Marlene
Fletcher
James & Theresa Flood
Donald & Susie Foppe
Edward & Joan Foppe
Emily Foppe
Loretta Foppe
Roger & Margaret Foppe
Wendy Frasier
Carol Fritch
Bob Freund
Sue & Ron Fuehne
Portia Fullgrabe

G
Lori Garcia

Randy Gehrs
Curt Gentry
Harold & Christina
Gentz
Bob & Lisa Gerner
Jacqueline Gerstner
Rick & Barb Gerstner
& Family
Ruth Gerstner & Family
Stanley & Ruth Gezella
Daniel & Dixie Glaub
Bob & Agnes Glaub
Pauline Glenn
Dr. Penny Gozia
Dave & Diane
Grapperhaus
Mary Grapperhaus
Debra Gray
Betty L. Gross
Paul & Margo Gunsser

H
Rob Haag
Bryan & Teresa Haake
Rich & Marcie Hacker
Jeff & Jennifer Haidu
Theresa Hanson
Joann (Pete) Harper
Gerald T. Harris
Terry & Mary Harris
Rosemary Hatton
Bernard & Marilyn
Heimann
Jim & Kathie Heimann
Joe & Nancy Heimann
Johanna Heimann
Joseph Heinzmann
Frank & Madelyn
Hellige
Glenn & Gail Hemker
Jim & Judy Hemker
Joe & Carol Hemker
Mary Jo Hendricks
Art & Sylvia Henken
Dennis & Barbara
Henken
Norm Herzing
Paul Herzing
Scott & Sheri Herzing
Charles & Carla Hilmes
Larry & Marla Hilmes
Jan Hincapie
Bob & Kathy Hitpas
Dan Hitpas
Mark & Becky Hitpas
Patrick & Carol Hitpas
Francis & Florence Hogg

Marvin & Jane
Hollenkamp
Nick & Beth
Hollenkamp
Savannah Holmer
Jean Holtgrave
Cindy Holtgrewe
Marsha D. Holzhauser,
Attorney-at-Law
Jessica Hopkins
Don & Sandy Hostmeyer
Alan Howard
Jeannette Huber
Steve & Ellen Huegen
Carl & Geri Huels
John & Diane
Huelskamp, Sr.
John & Kim Huelskamp
Mark & Karen
Huelskamp
Bernard & Irene
Huelsmann
Karen Huelsmann
Mike & Lynne
Huelsmann
Alicia Hustedde
Tom & Jan Hustedde

I
Douglas & Julie Isaak

J
Robert & Janet Jacob
Carl & Margaret Jakel
Dale Jakel
Alfred Jansen
Barb Jansen
Chad & Jennifer Jansen
Jerry & Martha Jansen
Lawrence & Rose Jansen
Theresa Jansen
Virgil & Diane Jansen
Linda Johnson
Mark & Donna Johnson
Steve & Linda Johnson
Gary & Denise Johnston

K
Stanley J. Kalmer
John & Mary Kampwerth
Paula & Scott
Kampwerth
Vera Kanak
Thomas & Celia Kannall
James Kaulig
Jeff & Renee Kehrer
Deb & Ken Keilbach

John & Fern Kelly
Sherri Khile
Tammy Kirksey
Deborah Kleiboeker
Jerrri-Lynn Kleina
Del & Gerry Kloeckner
Gary Kloeckner
Roman W. Kloeckner
Norb & Jane
Klostermann
Ruth Koblenz
Matthew Koch
Sonny Koch
Melissa Kohnen
Randy & Bonnie
Kohrmann
Ryan & Shelly
Kohrmann
Craig & Dana Korte
Jerry & Judy Korte
Linette Korte
Ralph & Donna Korte
Thomas & Marian Korte
John & Barb Krebs
Jim & Tammy Kreke
Don & Norma Krohn
Norman Kropp
Wilfred & Edna Kueper
Wayne & Amy Kruse
James & Colleen Kuhl

L
Michael Labelle
Michelle Lafollette
Rachel Laier
Roger & Florence
Lakenburgs
Ken & Margie Lammers
Adelpha Lampe
Jason & Reagan Lampe
Thomas Lampe
Kevin Landmann
Joe & Sylvia Langhauser
Burnell & Sue Laux
John & Carol Lengerman
Angie Leonetti
Marc Levi
Angela Lewis
Andrea Linders
Cindy Litteken
Dennis & Rita Litteken
Michael & Diana Loehr
Severin Loepker
Peter F. Longshaw
Claudia Lowry
Keith & Andrea Lueking

M
Linda Majchrzak
Linda Marti
Roy & Leona Marti
Donald & Julia Maue
Jerry & Marilyn
McDevitt
Joseph & Barb
McNamara
Michael & Monica
Mensing
Tim Mensing
Ken & Susan Meyer
Mary Ann Meyer
Joe & Anne Michalski
Louise Miller
Edwin Mills
Marylyn Minard
Jon & Geralyn Minton
Judy Mueller
Robert Mueller
Bertha Murphy
Joseph & Deb Murphy
Marie Murphy
Peter & Deb Murphy
Paul & Joyce Musenbrock

N
James & Terri Neighbors
Harry & Darleen Nelson
Rick & Barbara Nelson
Robert & Melissa
Netemeyer
Steven & Michelle
Netemeyer
Mike & Donna
Nettemeier
Tanya Neuf
Cindy & Rob Neumann
Angi Niemeyer
Cindy Niemeyer
Elsie Niemeyer
Greg & Marie Niemeyer
John & Janice Niemeyer
Pat & Esther
Norrenberns

O
Bobby & Carolyn Odum
Don & Kay Ostrom
Norb & Dee Ottensmeier
Sandra Owens

P
Brian & Maureen Papa
James Patterson
Tim & Leslie Pedtke



During lunch periods on Valentine's Day, program participants and their special friends were treated to a quiet lunch away from their normal lunch area. In recognition of the special day, the couples also had their pictures taken.



First Step, a division of Community Link, promotes parent involvement through Family Play Groups such as this one at the Breese City Pool, as well as Policy Council, Parent Committees, community classes, and field trips.



Three individuals enrolled in the Community Living Program along with staff person Brenda Robertson enjoyed a St. Louis Cardinals baseball game on May 13th, 2013. These tickets were made possible by Blaine Rehabilitation Management.



First Bank Breese employees volunteered at registration during the Community Link St. Patrick's Day Gala on March 17th, 2013. First Bank employees regularly volunteer at Community Link's other fundraisers as well, which include the Buddy Walk and the two Golf Scrambles. Pictured l to r: Geri Wobbe, Marilou Rakers, Joyce Timmermann, Amy Kampwerth.



The Clinton County Parrot Head Club, a non-profit organization whose purpose is to help charitable organizations and assist in community outreach programs, hosted their 6th Annual Spring Phling on February 23rd, 2013. Proceeds from the raffle ticket sales and auction benefited Community Link.



Clinton County Parrot Head Club members braved the cold weather to grill hot dogs for 7th Annual Buddy Walk on April 27th, 2013. Pictured l to r: Carl Wessling, Jim Taylor, Janelle Holtmann, Jennifer Wienker, Todd Peppenhorst (CCPHC President), Kris Kauling, and Natasha Kauling.

Randy & Kim Peek
 Betty Pendleton
 Park & Nancy Penwell
 Herb & Jodi
 Pingsterhaus
 Mike & Barb Plocher
 Ben & Melissa Poletti
 Kelly & Dennis
 Pollmann
 Terry & Wilma Postin
 Ken Powless
 Bruce Prediger
 Craig Prediger
 James & Catherine
 Prediger
 Clarence Price

R
 Tom & Nancy Rakers
 Gerry Ramey
 Family of Lynn Randall
 Robert & Pat Range
 Rick & Rita Ratermann
 Rodney & Katie
 Ratermann
 Don Reeves
 William & Dee Reeves
 Francis & Rose Marie
 Rehkemper
 Gerald & Paula
 Rehkemper
 Dan & Nancy Renschen
 Roger & Judy Richards
 Joanie Richter
 John & Bernadine
 Richter
 Kurt & Lynn Ripperda
 Ron & Mary Ripperda
 Jan & David Rittenhouse
 Chris & Lisa Rivera
 Renato Rivera
 Betty Robben
 Kent & Connie Robben
 Wilma Robinson
 Gene & Martha Robke
 Glenn & Elaine Robke
 Katharine Rogers
 Ed & Donna
 Rolfingsmeyer
 Myrt & Pat Rollins
 Dan & Jane Rosen

S
 Shannon Sartain
 Kurt Schenk
 Timothy & Lorien
 Schleper

Tina Schleper
 Donald & Joyce Schmidt
 Jim & Lynn Schmidt
 Kristin Schmidt
 Jack & Evelyn Schmitt
 Donald & Judy Schniers
 Allan & Marilyn
 Schorfheide
 Dorothy Schrage
 Edward Schrage
 Judy Schrage
 Ray & Romy Schrage
 Jim & Dianne Schroeder
 Kevin & Karen
 Schroeder
 Mike & Linda Schuette
 Martin Schumacher
 Mary Jo Schwarz
 Ron & Mary Scifres
 Mary Sereno
 Virginia Sexton
 Jeanie Sheathelm
 Dennis & Audrey Siegler
 Kristine R. Siegler
 Amanda K. Smith
 Clinton M. Smith D.C.,
 P.C.
 John & Linda Smith
 Larry Smothers
 Dale Snyder
 Lawrence & Jeanine
 Spirek, Sr.
 David & Diane Spradling
 Mary Stephens
 Mark Stewart
 Dale Strubhart
 Melissa Swagler
 George & Patricia
 Swengross

T
 William & Doris Tadlock
 Jim & Fran Taylor
 Dave & Connie Tebbe
 Emily Tebbe
 Cecil & Bonnie Thacker
 Joan Theising
 Elsie Thole
 Renee K. Thole
 Kenneth & Diane Thole
 Ralph Thole
 Charles Timmermann
 Cindy Timmermann-
 Deiters
 Madelyn Timmermann
 Maurice Timmermann
 Nick Timmermann

Patrick & Linda
 Timmermann
 Rob Timmermann
 Timothy Timmermann
 William J. Timmermann
 Dave & Shelley Toennies
 Dennis & Pat Toennies
 Denise Trame – Clinton
 County Treasurer
 Wayne & Jean Trampe
 Susan Triphahn
 Cecelia Tschannen

U
 Andrew Usselmann
 Steve & Mary Usselmann

V
 Christine Van Sickle
 Gary & Mary Vandelloo
 Virgil & Betty VanDover
 Stan & Mary Varel
 Joe & Patricia Vastine
 Marvin & Janet Venhaus
 Jean Vogt
 Betty Von Bokel
 Brenda Von Hatten
 Denise Vonder Haar
 Brad & Jill Voss
 Cyril & Eleanor Voss
 James & Donna Voss
 Jerry & Pat Voss
 Marian Voss
 Nicholas & Angela Voss

W
 Sue, Al & Jen Walter
 Terry & Ray Watek
 Dorothy Weber
 Mr. & Mrs. Louis G.
 Weisenfeld
 Duane Welsch
 Janice Welsch
 Bernard Wempe
 Shirley Wessel
 Brian & Kristen Wheeler
 Rodd & Lisa Whelpley
 Dennis & Genie White
 Maria Jesusa Wiegman
 Connie & Ron
 Wiegmann
 Carol Wieter
 Junilla Wieter
 Hugo Wilke
 Paula Williams
 John Wilson
 Andy Winkeler

Gary & Diane Winkeler
 Stacy & Ann Winkeler
 Wayne & Janice
 Winkeler
 Brian & Amy Wuebbels

Z

Angie Zahn
 Frank & Barb Zaloga
 Dorothy Zinn
 Lorraine Zurliene

**INDIVIDUAL
 GIFTS –
 CURBSIDE
 RECYCLING**

Anonymous
 Bob Brandkamp
 Charles & Carla Hilmes
 Kevin & Tiffany
 Hollenkamp
 Carl & Margaret Jakel
 Cindy Neumann
 Gary & Diane Winkeler

**IN-KIND GIFTS
 OF GOODS**

*(excluding Golf Scramble
 sponsors, recognized in ad)*

from Businesses

4imprint
 54th Street Bar & Grill
 All Around Tree Care
 Barnes & Noble
 Book Store
 Belleville News
 Democrat
 Bent Oak Golf Course
 Blaine Rehabilitation
 Management, Inc.
 Breese Dental Care
 Breese Family Vision
 Carlyle IGA
 Casino Queen
 Centru Bank
 Dairy King
 Dynamic Vending
 Excel Bottling Co.
 Germantown Seamless
 Gutters
 Gil Klein's Brand Source
 TV & Appliances
 GRS Construction, Inc.
 Hardees of Breese
 K & J Chevrolet, Inc.

Looking Glass Playhouse
 Lynfred Winery
 Mid-County
 Auto Supply
 Mioux Florist &
 Greenhouse
 Missouri Botanical
 Garden
 NASCAR SpeedPark
 Nelson Heating &
 Cooling
 Nine Seventy Furniture
 & Flooring
 Oak Brook Golf Club
 Parisi Speed School
 Raging Rivers
 Ralcorp Holdings, Inc.
 Rehkemper & Son, Inc.
 Rickhoff & Associates,
 LTD
 Schuette's Markets
 Signature Hardscapes,
 Dustin Nelson
 Silver Dollar City
 Six Flags Friends
 South Central Transit
 of Illinois
 Southern Bus & Mobility
 Southern OB/GYN
 Associates
 St. Louis Cardinals
 St. Louis Rams
 Stone Hill Winery
 Taylor Made Signs
 TechKnow Solutions, Inc.
 The Ease Program
 The Magic House
 Ticketmaster
 Twin Oaks Golf Club
 Wal-Mart - Highland
 Yorktown Golf Course

*from Organizations/
 Gov't.*

Carlyle Christian Church
 Central High School
 Students
 City of Breese - Pool
 Eldon Hazlet
 Swimming Pool
 St. Anthony Parishioners,
 Beckemeyer
 St. Bernard Parishioners,
 Albers
 St. Joseph Hospital
 St. Joseph Hospital RNs
 St. Mary's Radiology
 Department

St. Paul Parish –
 Fr. Chuck,
 Judy Hesson,
 Connie Knebel,
 Cafeteria Workers,
 Marion Korte
 Trenton Tumbleweeds
 Garden Club
 United Methodist
 Women's Group
 West Gate Baptist
 Church Quilting
 Ladies

from Individuals

Anonymous
 Janice Aarns
 Jerry & Marian Albers
 Amanda Arnold
 Jeanette Benhoff
 Jim & Eileen Boeckmann
 Bob Brandkamp
 Mel & Janet Deien
 Geri Detmer
 Renae Donohoo
 Carolyn & Chris
 Enboden
 Adam & Jamie Fields
 Paul & Julie Fuehne
 Dave Gall
 Rich & Marcie Hacker
 Beth Hake
 Terry & Mary Harris
 Ed & Gerrie Haukap
 Johanna Heimann
 Madonna Heldenbrand
 Dennis & Barbara
 Henken
 Eric & Jamie Henken
 Ron & Helen Henken
 & Family
 Norm Herzing
 Carla Hilmes
 Kelly Hollenkamp
 Marvin & Jane
 Hollenkamp
 Jean Holtgrave
 Melissa Howard
 Tillie Hurley
 Leigh Janes
 Kendra Jansen
 Jeff Krebs
 Larry Kruse
 Jeanne Kueper-Krueger
 Mark & Laurie Kuhn
 & Family
 Ralph & Ruth Ann
 Langhauser



Community Link in Breese hosted four Mater Dei Catholic High School seniors as part of their senior service learning requirements for 3 weeks in January 2013. Seated are: Jade Beckmann and Mary Jo Hollenkamp; standing are: Rebecca Spears and Trevor Koerkenmeier.



Community Link in Fairview Heights hosted two students from Althoff Catholic High School as part of their senior service learning requirements for 3 weeks in January 2013. Pictured l to r: Michele McDaniel, Associate Director at Fairview Heights Metro, Miranda Wade, and Angela Vitt.



Alyssa Frerker, 2011 Miss Madison County, 2013 Miss Heart of Missouri, and a finalist in the Miss Missouri contest volunteered in May 2013 to help plant flowers. Alyssa is helping Marcia Taylor with the flower box.

Remembering Our Friends...

Mark Phillips

56, of Trenton, IL, passed away on October 28, 2012. Mark participated in the Adult Day Training program at the Breese West site. He was a resident of Oakview Home in Trenton, IL.

Alfred Edwards

82, of Swansea, IL, passed away on November 9, 2012. Alfred participated in the Adult Day Training program at the Fairview Heights Metro site. He was a resident of Specialized Living Center in Swansea, IL.

Jeffrey Scott Pinkerton

44, of Swansea, IL, passed away on January 20, 2013. Jeffrey participated in the Adult Day Training program at the Fairview Heights Metro site. He was a resident of Specialized Living Center in Swansea, IL.

Anthony "Tony" Korando

58, of New Baden, IL, passed away on February 28, 2013. Tony participated in the Adult Day Training program at the Breese West site. He was a resident of Clinton Manor Living Center in New Baden, IL.

Bernice A. Freund

82, of Aviston, IL, passed away on May 16, 2013. Bernice participated in the Community Living Specialized Services program in Breese. She was a resident of Countryside Manor in Aviston, IL.

Zachary Gene Guppy

25, of Belleville, IL, passed away on June 11, 2013. Zachary participated in the Adult Day Training program at the Breese East site. He was a resident of Royal Living Center in Belleville, IL.

Jamie Litteken
Cindy Lockhart
Senator Kyle McCarter
Ken & Susan Meyer
Rick & Barbara Nelson
Sandra Owens
Randy & Kim Peek
Betty Pendleton
Pam Peters-Huffines
Ben & Melissa Poletti
John & Maria Price
Terry & Joan Riffel
Deborah Rigdon
Ed & Donna Rolfingsmeyer
Jan Schneider
Steve & Deb Schomaker
Edward Schrage
Ray & Romy Schrage
Kathy Shaw
Kristine Siegler
Ginnie Smith
Dave & Connie Tebbe
Pete & Jackie Toennies
Torres/Fite Family
Wayne & Jean Trampe
Brad & Becca Varel
Pat Voss
Genie White
Diann White
Jennifer Wienker
Carol Wieter
Greg & Jan Wilburn
Renee Wilke
Steve & Karen Woolf
Dan & Elizabeth Wunder
K.G. & Ann Yauches
Franklin & Barb Zaloga
Laverne & Ethel Zurliene

IN-KIND GIFTS OF VOLUNTEER SERVICE

from Businesses

First Bank - Breese

from Organizations

Althoff Catholic
High School Senior
Service Students
CC Parrot Head Club
Delta Theta Tau Sorority

Mater Dei Catholic
High School Senior
Service Students
Mater Dei Catholic
High School Track
Team
McKendree University
Track & Field

from Individuals

Janice Aarns
Jaclyn Albers
Mike Bango
Emma Basler
Alyssa Bassler
Jade Beckmann
Ron Bequette
Jim Boeckmann
Katrina Boogerd
Marilyn Calvert
Melissa Chwascinski
Stephanie Cook
John Feldman
Adam & Jamie Fields
Nichole Fields
Rick Fitzgerald
Lorie Frein
Alyssa Frerker
Rosie Frisch
Chris Gebke
Cindy Grefe
Deb Guest
Rich & Marcie Hacker
Beth Hake
Diana Hamilton
Stacy Hart
Bernard & Marilyn
Heimann
Cheryl & Jennifer
Heimann
Cateri Hellige
Jeremy & Laurie
Hemker
Mark Hemker
Nikki Hemker
Dennis Henken
Carla Hilmes
Tara Hilmes
Marla Hilmes
Mary Jo Hollenkamp
Nick Hollenkamp
Karen & Emma
Huelskamp
Kourtney Huelskamp
Johnna Huggins
Cameron Husey
Alicia Hustedde

Karis Johnson
Kristi Johnson
Amy Kampwerth
Florence Kassen
Kris & Natasha Kauling
Heather Keene
Deb & Cheryl Kehrer
Kelly Klostermann
Susan Knapp
Trevor Koerkenmeier
Matt Kohnen
Glen & GERALYN Kruep
Courtney Kuhl
Ken Laux
Jamie Litteken
Kim Lohman
Janice McElroy
Monica, Melanie &
Maggie Mensing
Mary Miller
Alex Morrison
Bridget Nelson
Barb Nelson
Randy Peek
Todd Peppenhorst
Marilou Rakers
Lisa Rehkemper
Erick Requalt
Eric Robke
Rachel Ross
James Rouse
Mike Schrage
Christy Sheldon
Kristine Siegler
Kyle Smith
Rebecca Spears
Kerry & Kathy
Steinmann
Jim & Fran Taylor
Leroy Taylor
Joyce Timmermann
Aaron & Chris Toennies
Jackie Toennies
Mary Varel
Tim Varel
Angela Vitt
Miranda Wade
Kathy Wempe
Carl Wessling
Trent Weston
Connie Wiegmann
Janelle Wiegmann
Jennifer Wienker
Geri Wobbe
Angela Zurliene

First Step hit with Federal budget cuts...



...to a bright future

The First Step Early Learning and Family Support's Early Head Start Program is feeling the impact of the Sequestration of Federal Funds. All Head Start and Early Head Start programs around the country received

a budget cut of 5.27%. The total amount of federal funding for First Step EHS program has decreased from \$343,476 to \$325,375, a decrease of \$18,101 per year. This cut was effective May 1, 2013.

Numerous programs like these throughout the United States are closing down sites, laying off staff, and cutting the number of children and families served. First Step is cutting enrollment from 54 children and pregnant women served at one time to 49. This means a cut of approximately 20 children and pregnant women per year. We were also forced to cut one Parent Educator from full time to part time. Many families are being affected, and will not be able to receive the comprehensive services that EHS provides. ❖

United Way supports nonprofit agencies like Community Link...

The annual United Way Campaign began on September 3rd, and runs through October 31st. The dollars raised during this campaign supports a system of over 170 nonprofit agencies in 16 counties in Illinois and Missouri. Each year, one in three local people are helped through United Way, helping to make our region a better place for all of us.

Community Link recognizes the importance of the funding that is invested in our community and the communities around us, and as an agency have set a goal to raise \$15,000 through support from employees. Illinois Division agencies received over \$3 million in 2013 from United Way, with Community Link receiving over \$230,000.

This support matters to so many in our region, helping to fund our programs and others in need in our area. Community Link is proud to be a United Way member agency! ❖



Community Link Social Media Sites



Visit and Like us on Facebook and see daily postings of exciting news from Community Link, www.facebook.com/commlink1972



Follow us on Twitter, www.twitter.com/CommLinkInc



Learn more about Community Link and the services we offer, view our news section, and donate online by going to www.commlink.org

Helping people.



United Way of Greater St. Louis

Volunteer

Share
your
time &
talent ...

- Artistic individual who demonstrates a love for art such as mosaics, pottery, jewelry making, painting, chinks, etc.
- Storyteller
- Reading Buddy to help individuals learn to read, or just read to a group/individual
- Creative individual to teach others to quilt, stitch, make blankets, etc.
- Green thumb or not, to teach the love of gardening
- Help people with disabilities to participate in fun activities and volunteerism within the community.



Courtney Kuhl, then a volunteer and now a Program Manager at the Breese Day Training West site, volunteered to teach Kathy Wempe, a program participant at both the Breese Day Training West site and the Breese East Production site, the piano. Kathy learned "Tongue Twister", which she performed at the Community Link St. Patrick's Day Gala on March 17th, 2013.



During National Volunteer Week, Community Link honored Stacy Hart (l) for her volunteer work at the Breese Day Training West site. Stacy visited every Monday to provide program participants with a makeover. She provided a spa-like atmosphere along with hair dressing, manicure, and a basic massage. Sissy Louden (r), program participant, was a customer of Stacy's.



Community Link asked...and they came! Through a request on Facebook, these lovely ladies volunteered to wrap gifts for program participants. Pictured l to r: Brianna Keene, Marcie Hacker, and Diana Hamilton. Not pictured: Susan Knapp.



Janet Burgess, Community Link program participant at the Breese Day Training West site, has a tremendous love for owls. Knowing how much she loves owls, Josh Cliff, a former Habilitation Assistant, gave Janet a special gift, an owl hat. Josh's wife has a wonderful talent for making hats, and donated this cute owl hat to Janet.

Thank You, Donors

July 1, 2013 – August 31, 2013

BUSINESS / ORGANIZATIONS

Crafts & Occasions
Knights of Columbus
• Aviston Council #11110
• Carlyle Council #1382

Kathy Steinmann
St. Paul Church – Judy Hesson,
Joan Riffel, Connie Kloss
& Mrs. Weise
Raina Taylor
William & Doris Tadlock

INDIVIDUALS

Anonymous
Patricia Boien
Michael & Marilyn Buscher
Robert & Lucille Lippert
Marilyn Sammarco
Dennis & Deb Tegenkamp
David & Shelley Toennies

IN MEMORY OF...

Elizabeth "Betty" Wilke *from*
Felix Wilke Family

United Way / AT&T Campaign

from
Anonymous
Ronald Arentsen
Debra Dumstorff
Rob Haag
Jason Lampe
James Kuhl
Jeff Kehrler
Mark Hitpas

IN-KIND SUPPORTERS

Barefootin' Saloon
Blaine Rehabilitation
Management, Inc.
Sheena Bowen
Eileen Cummings
Diana's Draperies
Mary Dix
Rena Donohoo
Jeanette Evans
Jamie Fields
Dave Gall
Girl Scouts of Southern Illinois
Madonna Heldenbrand
Carla & Cierra Hilmes
Jean Holtgrave
Kendra Jansen
Courtney Kuhl
Mark & Laurie Kuhn & Family
Jamie Litteken
Cindy Lockhart
Steve & Margaret Loomis
Michele McDaniel
Dan & Susan Potthast
Frances Ratermann
Terry & Joan Riffel
Brittany Robbins
Eric Robke
Courtney Schweickhardt

United Way /
Citigroup Campaign *from*
Cindy Holtgrewe

United Way / Macy's Campaign
from
Anonymous

United Way / Target Campaign
from
Gwen Fischer

United Way / Wells Fargo
Campaign *from*
Michael & Phyllis Carter
Theresa Jansen
Gary Kloeckner
Ken Powless
Jill Voss

United Way of Greater Kansas
City Campaign *from*
Amy Kruse



Thanks to the sponsors of our
1st Annual Metro Golf Scramble
Saturday, July 27, 2013

GOLD SPONSORS



SILVER SPONSORS

A&D Electrical Supply, Inc.	Operating Engineers Local 520
Allsup, Inc.	Poettker Construction Co.
Archway Electrical Sales, Inc.	Weilmuenster Law Group, P.C.
Excel Bottling Co.	Woolpert, Inc.

BRONZE SPONSORS

Brent Bergheger Chrysler-Dodge	Highland Recycling & Shredding
Chesley Fence Company, Inc.	Holland General Contractors, Inc.
Dairy King	Medex Pharmacy
Dutch Hollow Janitorial Supplies	Miken Technologies, Inc.
Erdmann Law Office	Professional Equities, Inc.
First County Bank	Wilke Truck Service, Inc.
Greensfelder, Hemker & Gale, P.C.	Wilke Window & Door, Inc.
Johanna Heimann	

Gifts In Kind & Other Donors: 54th Street Bar & Grill, Acorns Golf Links, Applebee's Neighborhood Grill & Bar, Cambridge Dental Care, Chase Vending, Chevys Fresh Mex, Clinton Hill Golf Course, Courtney & Brad Schweickhardt, Dairy King, Dixon Golf, Dobbs Tire & Auto Center, Excel Bottling Co., Five Guys Burgers & Fries, Four Points by Sheraton, Gateway Grizzlies, Golden Corral, Golf Discount, Golf Galaxy, Golfsmith St. Louis, Grey Eagle Distributors, Hilton Garden Inn O'Fallon, Jeanette Evans & Dean Frerking, Jeff & Raina Taylor, Joe's Crab Shack, John & Carol Lengerman, Kevin & Michele McDaniel, LongHorn Steakhouse, McAlister's Deli, Menards, Michael & Carol Birk, Papa Vito's Pizza, Poettker Construction Co., Polster, Lieder, Woodruff & Lucchesi, LC, Quail Restoration Association of IL, Red Lobster, Scott Credit Union, Starbucks, Steamfitter's Local 439, Stonewolf Golf Club, Tamarack Country Club, Taylor Made Signs, The Egg and I

Thanks to all the golfers and team sponsors!

Community Link is a proud member of
United Way of Greater St. Louis



A Day in the Life of Alex

“Kindness is the language the blind can see and the deaf can hear.”



Alex flexing his independence and wheeling himself to Classroom 11.

This is a motto used at Community Link’s Developmental Training site located on the West side of Breese. One individual who embraces that motto is Alex S. Alex is 32 years old and has a diagnosis of Cerebral Palsy. Alex has the opportunity to come to Community

Link each day by riding a South Central Transit bus that has enough room for his electric wheelchair. A Community Link staff member greets him in the hallway and encourages his independence by letting him drive himself down the hall to his classroom, touching his hand in the direction he needs to go if he goes off course. During this time he stops to say hello to all of his friends, and they allow him as much time as he needs. He then reports to room 11 where Missy Gaskill and Brianne Wellen make his life much more manageable. At this time he needs to use the restroom, which is a simple task for most people, but Alex must be lying down. He is provided with as much privacy as he needs. He enjoys joking with the staff while they are tending to the other clients.

Alex is repositioned back to his wheelchair to go to lunch. He doesn’t have enough strength in his arms to feed himself more than a couple of bites, so staff members assist him with his lunch. When he is finished eating he wheels over to another table to visit with his friends. After lunch he goes back to his classroom to work on his goals, some of which include money identification and identifying his name. He is then repositioned to his NASCAR themed bed and asks to watch his Dale Earnhardt DVDs, which were a gift

from the staff.

When he gets back in his wheelchair, staff assists him to drink a soda and then he does his communication goal, which is talking to a staff member of his choice for a minimum of 5 minutes. He also enjoys emailing his sister to keep in touch with her and to see pictures of his new nephew.

Community Link staff members understand Alex’s unique wants and needs, and are able to help provide a life and experiences that he would not otherwise be able to enjoy. ❖



Missy Gaskill, Habilitation Specialist, helps Alex re-adjust in his wheelchair.



One of Alex’s goals is to identify letters of the alphabet. Missy places the letters on a clipboard and asks Alex to show her the “E”.

We-Think-We-Can Attitude for Strategic Planning and Vision for the Future



Dear Friends,

One of my all-time favorite children's books has to be *The Little Engine That Could*. This timeless classic, written in 1930, is the story of a little train that volunteers to pull a significantly larger broken down train up a hill after several bigger trains refused to do so. Against all odds and with

an optimistic mantra of "I Think I Can," the little engine succeeds in fulfilling the mission.

What I find interesting about this story is how much it relates to Community Link. Many of the messages contained in this story such as determination, courage, optimism as well as the values of hard work and spirit of volunteerism, can also be found throughout Community Link. In fact, the organization's rich history is replete with participant, staff, stakeholder and volunteer antidotes where the message of "I Think I Can", or more often, "We Think We Can", prevails.

We are very proud of the founding families of Community Link who, at that time, defied the common practice of institutionalizing their children with developmental disabilities and walking away; we are proud of the staff who believe in "Disabilities to Possibilities" and who recognize that people with developmental disabilities are capable of designing many parts of their own life plan as well as participating in their communities; our management team, who have held fast to our mission despite years of rate freezes, State budget chaos, unfunded mandates and challenges to institutional capacity; and our Board of Directors, who uphold our vision and support our efforts.

It is in the Participants of Community Link, however, where we find the greatest examples of the "I Think I Can!" attitude. That is the reason why, when given the opportunity, there seems to be no end in their desire to learn, work, hone new skills and make friends, all within a goal to be as independent as possible. Our challenge, therefore, is to assure those opportunities continue to exist by creating new programs, strategies and ways of thinking that appeal to independence and a wide variety of ages and interests. As is always the case, our biggest restraint is the cost, since these Quality of Life programs generally do not qualify for government funding.

Throughout our history, there has never been a time when Community Link did not have its share of struggles. It is your belief in our mission and willingness to make an investment in the lives of the remarkable men, women, and children we serve, however that has been instrumental in our ability to continue to meet the challenge. As always, we are grateful for your generous support. It has assured a never-ending array of opportunities for our Participants. As Community Link enters a new round of strategic planning and visioning for our future, together we will bring the "We Think We Can" attitude that has always served us so well! ❖

Sincerely,

Executive Director



Community Link Possibilities

P.O. Box 157
1665 North 4th
Breese, IL 62230



Nonprofit Org.
U.S. Postage
PAID
Breese, IL
Permit No. 9

ADDRESS SERVICE REQUESTED



Selections From Our Wish List

First Step

- Outdoor gazebo canopy/tent
- Landscaping rock
- Infant (3) & toddler (7) car seats
- Child picnic tables (folding/portable)
- Digital cameras
- Gift cards: Walmart, gas, local establishments, Lowe's Home Depot, Sam's Club
- Infant/toddler white t-shirts (0-36 mos)

ADP West

- New recliners
- Energy Audit
- Paint 6 classrooms
- Wheelchair accessible sinks
- New electric stove
- Industrial washer & dryer
- iPads for clients

Aviston CILA

- Garden tools
- Finished basement
- New carpet in bedrooms

Breese 245 CILA

- New/like new end tables & coffee table
- General exercise equipment

Breese 373 CILA

- New family room chair

Breese 555 CILA

- Ceiling fans living room & bedrooms
- Garage
- New shed
- New refrigerator
- New deep freezer

Carlyle CILA

- New bathroom shower
- New kitchen cabinets
- Landscaping

Germantown CILA

- New flooring in bedroom
- New dining room chairs

Production

- Wheelchair exercise DVDs
- Hand-held magnet
- Art supplies (chalks, canvas, fleece material, etc.)
- Clay flower pots (any sizes)

- Cricut supplies (paper, cartridges, etc.)
- Expand/remodel restrooms
- iPads for client use
- Roof over receiving area

Fairview Heights Metro

- Wrought iron patio set with chairs
- Outdoor bench & lawn swing
- Cricut supplies (paper, cartridges, etc.)
- New flat screen television
- DVD players, DVDs & CDs
- iPads for clients
- New recliners

Recreational Items

- Use of condo or cabin
- Hotel certificates
- Sports team, theater, concert tickets
- Lawn chairs & coolers
- Card tables & chairs
- Restaurant certificates

Agency-Wide Needs

- Asphalt for parking lots
- Carpet